



Tree Anchoring Solutions

Securing newly planted trees in rural & urban environments



Tree anchoring solutions

Gripple tree anchoring systems comprise a range of kits for securing newly planted semi-mature trees, protecting them while they become established and promoting vertical growth in tree avenues. They are optimised for quick and easy installation for both urban and rural environments.

An introduction to Gripple

Gripple is a global company providing products and services for landscape & nursery, building services, civil construction, seismic and agriculture industries. Our solutions are synonymous with time-saving simplicity and problem solving innovation. Supported by outstanding customer support, quality control and advanced manufacturing, we deliver market-leading products, trusted by customers around the world.

Root Ball Kit

Below ground tree anchoring system designed to stabilise newly planted semi-mature trees. Features a strap tensioning system for ease of use and supplied in ready-to-use kits.

- **Simple** – fast installation
- **Long-lasting** – allows tree to naturally establish itself
- **Secure** – deters vandals as there is no sign the tree is newly planted
- **Versatile** – sizes available to fit most applications, as shown below
- **Safe** – trip hazard reduced as the kit is underground



Kit varies dependant on size.

Product Name	Tree Height	Tree Girth	Description	Wire Information
GRBK3	4.5 m	25 cm	<ul style="list-style-type: none"> • Gripple Anchor TL-A3 • Quick Links • 3 m x 40 mm strapping • Ratchet tensioner 	3 mm 1 x 19 ZnAL coated high tensile steel wire. Tensile Strength 1770 MPa. Breaking Load 800 kg
GRBK4	7.5 m	45 cm	<ul style="list-style-type: none"> • Gripple Anchor TL-A4 • Quick Links • 5 m x 40 mm strapping • Ratchet tensioner 	4 mm 1 x 19 ZnAL coated high tensile steel wire. Tensile Strength 1770 MPa. Breaking Load 1200 kg
GRBK5	12 m	75 cm	<ul style="list-style-type: none"> • Gripple Anchor TL-A4 • Quick Links • 5 m x 40 mm strapping • Ratchet tensioner 	6 mm 7 x 19 ZnAL coated high tensile steel wire. Tensile Strength 1770 MPa. Breaking Load 2250 kg



Kits are also available with four anchor points on request



Premium Root Ball Kit

The premium range of root ball kits share the same benefits of the standard kits with the addition of the Gripple Dynamic range. This allows adjustment of the anchor points to ensure the correct and most secure installation of the tree by guiding the loop into the best position.

- **Adjustable** – optimum positioning of anchor point irrespective of ground conditions
- **Strong** – high load performance for safety and security
- **Secure** – deters vandals as there is no sign the tree is newly planted
- **Long-lasting** – allows tree to naturally establish itself
- **Simple** – fast installation
- **Versatile** – sizes available to fit most applications, as shown below
- **Safe** – trip hazard reduced as the kit is underground



Kit varies dependant on size.



Kits are also available with four anchor points on request

Tree Guying Kit

Provides an above ground tree anchoring solution to stabilise the tree and promote vertical growth. Supplied in ready to use kits and suitable for use with trees up to 12 m tall.

- **Safe** – ground level tensioning promotes vertical growth and reduces time working at height
- **Simple** – quick and easy installation
- **Quick** – tension and adjust with the Gripple tensioner and the Torq tensioning tool
- **Protective** – rubber sleeves eliminate frictional damage to trunk



Kit varies dependant on size.



Kits are also available with four anchor points on request

Product Name	Tree Height	Tree Girth	Description	Wire Information
PRBK3	4.5 m	25 cm	<ul style="list-style-type: none"> • Gripple D3 • Gripple Anchor TL-A3 • Quick Links • 3 m x 40 mm strapping • Ratchet tensioner 	3 mm 1 x 19 ZnAL coated high tensile steel wire. Tensile Strength 1770 MPa. Breaking Load 800 kg
PRBK4	7.5 m	45 cm	<ul style="list-style-type: none"> • Gripple D4 • Gripple Anchor TL-A4 • Quick Links • 5 m x 40 mm strapping • Ratchet tensioner 	4 mm 1 x 19 ZnAL coated high tensile steel wire. Tensile Strength 1770 MPa. Breaking Load 1200 kg
PRBK5	12 m	75 cm	<ul style="list-style-type: none"> • Gripple D6 • Gripple Anchor TL-A4 • Quick Links • 5 m x 40 mm strapping • Ratchet tensioner 	6 mm 7 x 19 ZnAL coated high tensile steel wire. Tensile Strength 1770 MPa. Breaking Load 2250 kg

Product Name	Tree Height	Tree Girth	Description	Wire Information
TGK2	2.5 m	12 cm	<ul style="list-style-type: none"> • Gripple Anchor TL-A2 • Gripple Plus Small • Quick Links • Protective rubber sleeves • Safety Webbing 	2 mm 7 x 7 Zn coated high tensile steel wire. Tensile Strength 1770 MPa. Breaking Load 280 kg
TGK3	4.5 m	25 cm	<ul style="list-style-type: none"> • Gripple Anchor TL-A3 • Gripple Plus Medium • Quick Links • Protective rubber sleeves • Safety Webbing 	3 mm 1 x 19 ZnAL coated high tensile steel wire. Tensile Strength 1770 MPa. Breaking Load 800 kg
TGK4	7.5 m	45 cm	<ul style="list-style-type: none"> • Gripple Anchor TL-A4 • Gripple Plus Large • Quick Links • Protective rubber sleeves • Safety Webbing 	4 mm 1 x 19 ZnAL coated high tensile steel wire. Tensile Strength 1770 MPa. Breaking Load 1200 kg
TGK5	12 m	75 cm	<ul style="list-style-type: none"> • Gripple Anchor TL-A4 • Gripple D6 • Quick Links • Protective rubber sleeves • Safety Webbing 	6 mm 7 x 19 ZnAL coated high tensile steel wire. Tensile Strength 1770 MPa. Breaking Load 2250 kg

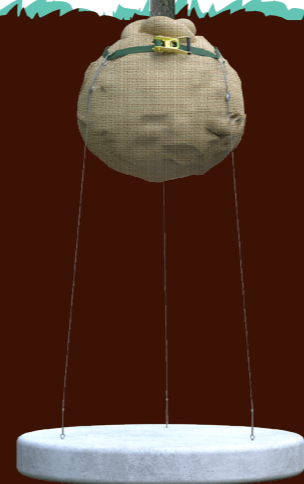
Concrete Fixing Kit

Below ground tree anchoring system designed to stabilise newly planted trees where concrete flooring or containers are below the planting location. Features a strap tensioning system for ease of use and is supplied as a ready-to-use kit.

- **Specifically engineered** – secures trees to a concrete structure where anchors cannot be driven
- **Simple** – quick and easy installation
- **Strong** – incorporates Gripple Dynamic tensioners for maximum strength in windy environments e.g. roof gardens
- **Secure** – deters vandals as there is no sign the tree is newly planted



Kit varies dependant on size.



Kits are also available with four anchor points on request

Product Name	Tree Height	Tree Girth	Description	Wire Information
CFK3	4.5 m	25 cm	<ul style="list-style-type: none"> • Gripple Plus Medium • Quick Links • 3 m x 40 mm strapping • Ratchet tensioner • M10 eyebolt and Drop-in Anchor 	3 mm 1 x 19 ZnAL coated high tensile steel wire. Tensile Strength 1770 MPa. Breaking Load 800 kg
CFK4	7.5 m	45 cm	<ul style="list-style-type: none"> • Gripple Plus Large • Quick Links • 5 m x 40 mm strapping • Ratchet tensioner • M10 eyebolt and Drop-in Anchor 	4 mm 1 x 19 ZnAL coated high tensile steel wire. Tensile Strength 1770 MPa. Breaking Load 1200 kg
CFK5	12 m	75 cm	<ul style="list-style-type: none"> • Gripple D6 • Quick Links • 5 m x 40 mm strapping • Ratchet tensioner • M10 eyebolt and Drop-in Anchor 	6 mm 7 x 19 ZnAL coated high tensile steel wire. Tensile Strength 1770 MPa. Breaking Load 2250 kg

DM Kit

Below ground tree anchoring system designed to stabilise newly planted trees. For use when the driving of anchors is not possible and a more traditional ballast system needs to be used, for example, concrete blocks. Features a strap tensioning system for ease of use and is supplied as a ready-to-use kit.

- **Simple** – quick and easy installation
- **Specifically engineered** – secures trees using available ballast where anchors cannot be driven
- **Strong** – incorporates Gripple Dynamic tensioners for maximum strength and adaptability to the size of the tree pit available
- **Secure** – deters vandals as there is no sign the tree is newly planted



Kit varies dependant on size.



Kits are also available with four anchor points on request

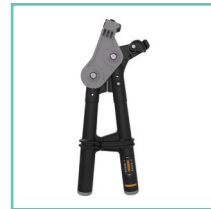
Product Name	Tree Height	Tree Girth	Description	Wire Information
DMK3	4.5 m	25 cm	<ul style="list-style-type: none"> • Gripple Plus Medium • Quick Links • 3 m x 40 mm strapping • Ratchet tensioner 	3 mm 1 x 19 ZnAL coated high tensile steel wire. Tensile Strength 1770 MPa. Breaking Load 800 kg
DMK4	7.5 m	45 cm	<ul style="list-style-type: none"> • Gripple Plus Large • Quick Links • 5 m x 40 mm strapping • Ratchet tensioner 	4 mm 1 x 19 ZnAL coated high tensile steel wire. Tensile Strength 1770 MPa. Breaking Load 1200 kg
DMK5	12 m	75 cm	<ul style="list-style-type: none"> • Gripple Dynamic 6 • Quick Links • 5 m x 40 mm strapping • Ratchet tensioner 	6 mm 7 x 19 ZnAL coated high tensile steel wire. Tensile Strength 1770 MPa. Breaking Load 2250 kg

Tools & Accessories



GPD

The Gripple Petrol Driver provides quick installation of Gripple's anchor range. Weighing only 15 kg, it is lightweight and portable. Rental options are available.



Torq Tensioning Tool

The Torq tensioning Tool is lightweight, compact and tensions up to 6 mm Gripple fasteners. Designed with a built-in gauge, the tool measures the tension as you apply.



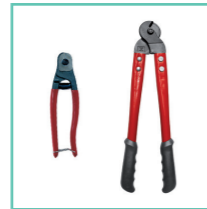
Contractor Tensioning Tool

The all-metal Contractor Tool is strong, robust and built to withstand wear and tear. Tension is easily applied to Gripple tensioners up to a maximum wire diameter of 6 mm.



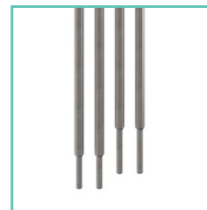
JackJaw®

Multi-Function tool extracts drive tools and load locks the anchor system.



Wire Cutters

Suitable for cutting high tensile wire up to 4 mm (Small Cutters) and 6 mm (Large Cutters).



Drive Tools

High strength rod specifically engineered for easy installation of anchors. Designed to be robust for re-use.

Tool Matrix

 Necessary Tool
 Optional Tool

		GPD	Hammer	Torq Tensioning Tool	Contractor Tensioning Tool	Wire Cutters	6 mm Wire Cutters	JackJaw®	Drive Tool No. 2	Drive Tool No. 3 (1 m)	Drive Tool No.3 (1.5 m)
Root Ball Kits	GRBK3										
	GRBK4										
	GRBK5										
Premium Root Ball Kits	PRBK3										
	PRBK4										
	PRBK5										
Tree Guying Kits	TGK2										
	TGK3										
	TGK4										
	TGK5										
Ballast Kits	DMK2										
	DMK3										
	DMK4										
Concrete Fix Kits	CFK3										
	CFK4										
	CFK5										

Technical Services



CAD Drawings

CAD drawings are available online for each of our systems. Gripple is committed to providing designers and architects with the content to allow the seamless integration of the required solution into their design.



Design Service

Our team of engineers are on hand to provide technical expertise when specifying our system. The design will incorporate a variety of factors including tree size, root structure, soil type, weather conditions and accessibility, ensuring the solution is fit for purpose.



Technical Submittals

Complete technical submittals can be supplied with each of our products, including best practice guides and design specifications.



On-Site

On site training and demonstrations are available on request, ensuring installers are fully confident when using our system.



Seminars

We offer accredited continual professional development presentations. These presentations provide full technical insight into tree anchoring systems, giving designers the opportunity to learn the benefits and advantages of using our solutions.

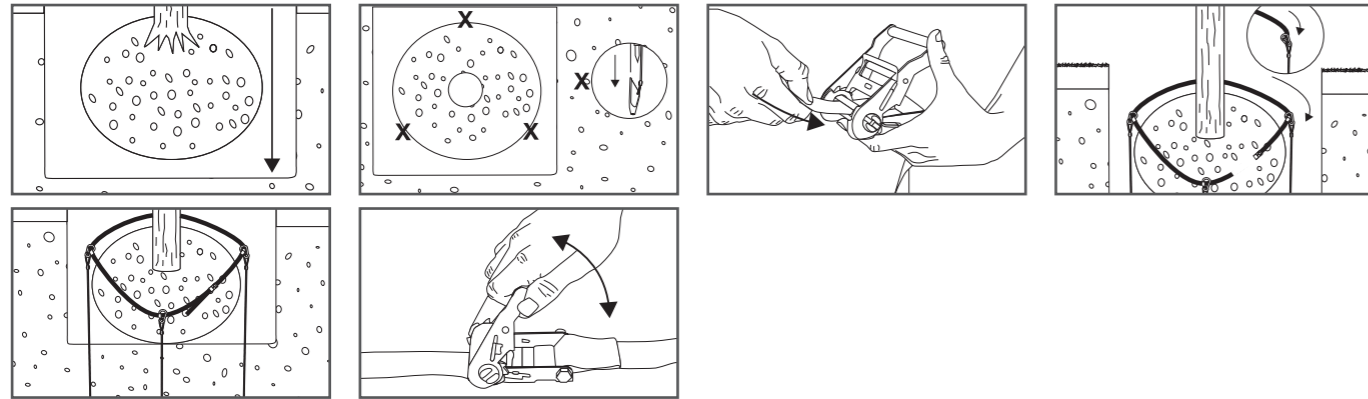


Contact

For more information visit www.gripple.com
 For technical services, including site visits, please call us on: **0800 018 4264**

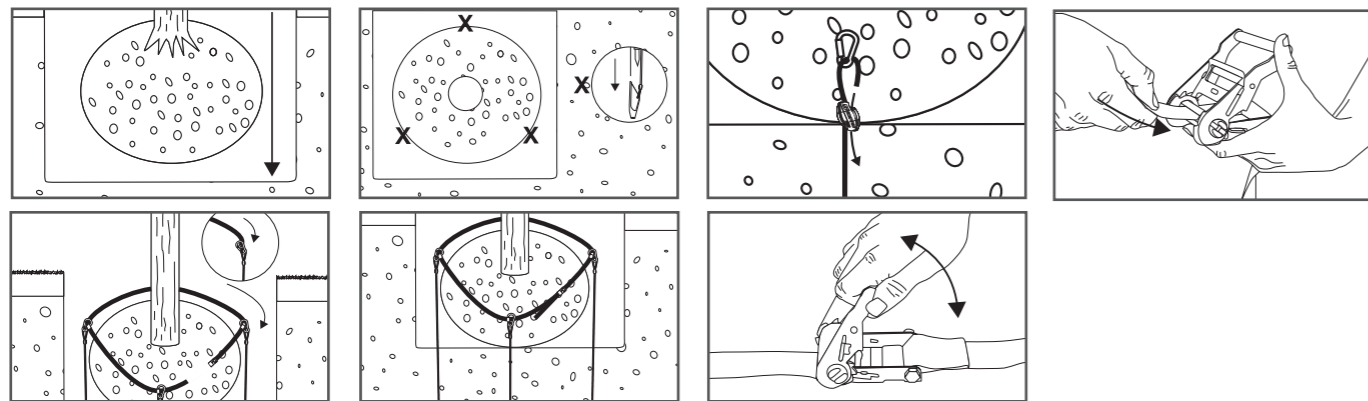
Technical Advice & Installation

Root Ball Kit



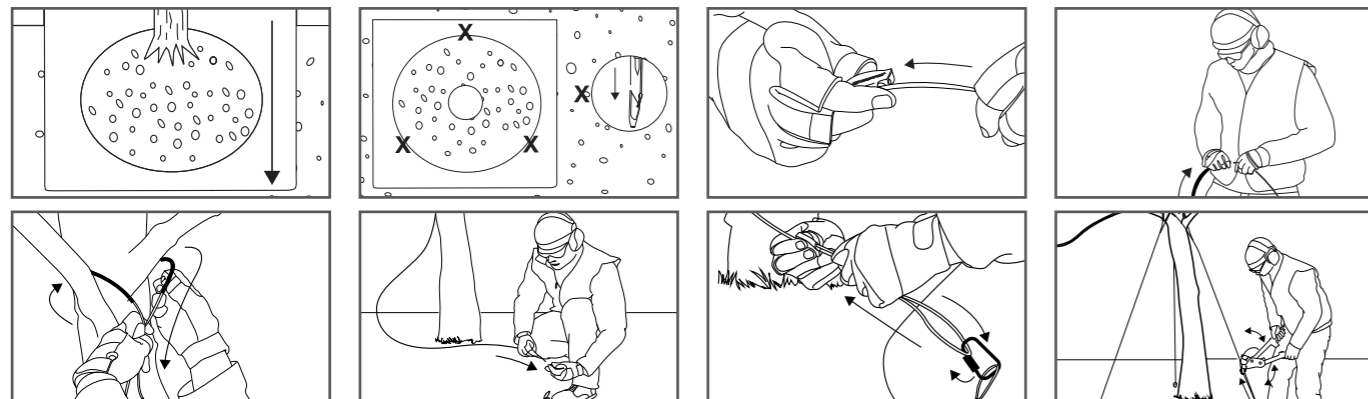
- Always lift the tree by the root ball and never the trunk.
- Ensure the hole is deep enough for root flare to be slightly higher than the surface grade.

Premium Root Ball Kit



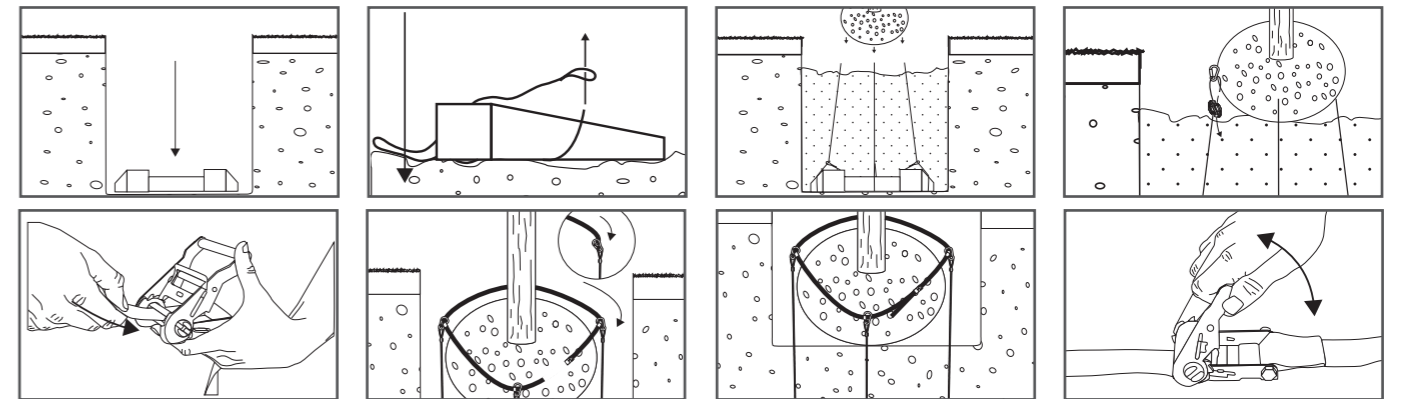
- In hard ground where full anchor depth is hard to achieve, the wire length can be adjusted using the Gripper tensioner.

Tree Guying Kit



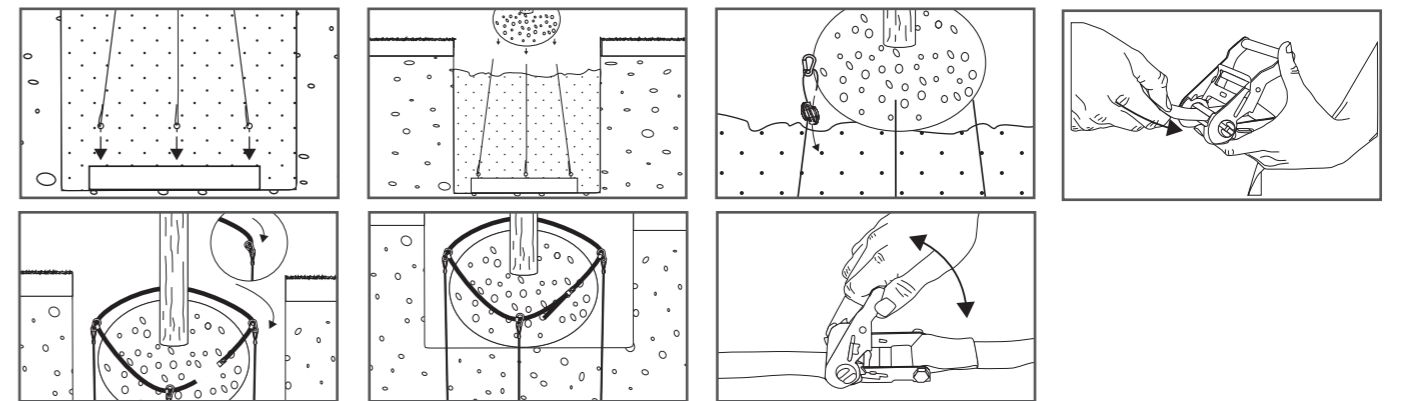
- Tension each of the guys as required using the Torq Tool until the tree is vertical.

Dead Man Kit



- Use the Gripper tensioner to adjust top loop height to the optimum level.

Direct Fix Kit



- Use the Gripper tensioner to adjust top loop height to the optimum level.

Product Load Ratings

	System Load	Wire Load
3 mm 1 x 19 wire	400 kg	800 kg
4 mm 1 x 19 wire	600 kg	1200 kg
6 mm 7 x 19 wire	1750 kg	2250 kg

www.gripple.com

info@gripple.com



Gripple Ltd (Headquarters)

The Old West Gun Works
Savile Street East
Sheffield S4 7UQ
UK

T | +44 (0) 800 018 4264

F | +44 (0) 114 275 1155

E | info@gripple.com

Gripple Europe SARL

1, rue du Commerce
BP 37
67211 Obernai Cedex
France

T | +33 (0)3 88 95 44 95

F | +33 (0)3 88 95 08 78

E | frinfo@gripple.com

Gripple Inc

1611 Emily Lane
Aurora
IL 60502
USA

T | +1 866 474 7753

F | +1 800 654 0689

E | grippleinc@gripple.com

Gripple India

C-115, Industrial Area
Phase I, Naraina
New Delhi-110028
India

T | +91-11-45136817

F | +91-11-45136817

E | ininfo@gripple.com

Gripple Canada Inc

6665 Tomken Road
Units 9-10
Mississauga, ON L5T 2C4
Canada

T | +1 905 458 8700

E | cainfo@gripple.com

Gripple Japan K.K

2-57 Tsukizi-cho
Hyogo-ku, Kobe-shi
Hyogo, 652-0845
Japan

T | +81 (0) 78 681 2121

F | +81 (0) 78 681 2122

E | japan@gripple.com



A GLIDE company



© 2020 Gripple.

Gripple is a registered trademark of Gripple Limited.
Company registered in England No. 1772901, VAT Reg No. GB 600 1951 88

LSN-BROC-LSN-ENG-3240

Published March 2020

Please refer to www.gripple.com for the most up to date user advice and product information.

