

Lutrasil® Pro,
a new generation of Crop Covering for
commercial Horticulture!

Lutrasil®
Pro



Lutrasil® Pro provides optimum yield:

- **Excellent durability, strength and tear resistance**
- **A flexible crop covering resistant to high winds**
- **Protection climate barrier for all horticultural crops**
- **Excellent water permeability, limiting water retention held in the cross section of the non-woven, thereby minimizing any damage to the crop below**
- **Optimum protection against pests**
- **Balanced temperature and humidity distribution**

Lutrasil® Pro is suitable for all applications:

- A range of weights
- Standard widths and roll lengths
- A wide range of standard items available
- Responsive delivery for standard products direct from our warehouse
- Alternative roll widths and lengths are available

NEW:

Now supplied in even longer roll lengths, but shipped in a packaged width of 1,60 m < > 2,40 m



Lutrasil®
Pro 19






Lutrasil®
Pro 23

Lutrasil®
Pro 30

Lutrasil® Pro spunbonded for horticultural applications

Product	Application	Variety
Lutrasil® Pro 19	Earlier harvests Frost protection Protection against insects and pests Energy barrier in plastic tunnels and greenhouses	Vegetable crops Lawns Ornamental plants Vegetable crops Young plants
Lutrasil® Pro 19 X		
Lutrasil® Pro 23	Earlier harvests Frost protection Lightweight winter covering	Vegetable crops in particular new potatoes and strawberries
Lutrasil® Pro 23 X		
Lutrasil® Pro 30	Winter covering Providing shade	Vegetable crops Ornamental plants Herbaceous plants Tree nurseries

Lutrasil® Pro Material availability

Product	Width cm	Length 100 m	Length 250 m	Length 500 m	Length 1000 m
	425	■	●	■	■
	640	■	●	■	■
	800	■	●	■	■
	2050	■	■	■	-
	850	■	●	■	■
	1050	■	●	●	■
	1100	■	■	■	■
	1200	■	●	■	■
	1280	■	●	●	■
	1360	■	●	■	-
	1480	■	■	■	-
	1600	■	●	■	-
	1700	■	●	■	-
	1050	■	■	■	■
	1200	■	■	■	-
	1280	■	●	●	-
	1360	■	■	■	-
	1600	■	■	■	-
	1050	■	●	■	■
	1200	■	■	■	-
	1280	■	●	■	-
	1360	■	■	■	-
	1600	■	■	■	-
	425	■	●	-	-
	640	■	●	-	-
	1050	■	●	-	-
	1280	■	■	-	-

X= with reinforcement

Special dimension on request according to our guidelines

● Ready in stock

■ On request

Instructions for use

When using as covering material, Lutrasil® Pro spunbonded should not be compared to other products such as perforated plastic or textile materials. Lutrasil® Pro spunbonded provide distinct advantages for horticultural applications on account of their physical and mechanical properties.

1. Handling Lutrasil® Pro spunbonded

Lutrasil® Pro is spread out on cultivated fields immediately after sowing or planting. This can be carried out either manually, or semi-mechanically using an unwinding (roller) device on a tractor. Lutrasil® Pro should be spread out loosely to allow enough room for the plants to grow to their full height, but without any creases in the material. Weight the edges of Lutrasil® Pro down with soil or small bags filled with soil or pebbles.

Note: It is absolutely essential that in the case of plants needing pollination (e.g. strawberries) Lutrasil® Pro is re-moved for a long enough period while they are in bloom. Once pollination is over the plants can be covered up again.

2. Fertilisers

Lutrasil® Pro spunbonded are not harmful to the environment and support eco-friendly methods of cultivation. Fertilisers can be used sparingly while maintaining a constant yield thanks to the high conversion of nutrients in the soil. Leaching of nitrates is substantially avoided. By applying fertilisers sparingly you can obtain optimum crop weights in spite of a reduction in the nitrate content of the plant.

3. Spraying plants

Note: Avoid spraying with pesticides at all times, since they may have a very detrimental effect on the effectiveness of the UV stabiliser in Lutrasil® Pro. This applies to all covering materials made of polypropylene and is therefore generally inadvisable.

4. Removing Lutrasil® Pro

Lutrasil® Pro should be removed when the weather is dry and calm. If the soil is heavy or wet make sure that the earth weighing down the material is loosened before removal.

5. Storing

We recommend storing Lutrasil® Pro in a dry, dark and well aerated room.

6. Disposal

After use, Lutrasil® Pro can be disposed of in a refuse incineration plant or at a refuse tip without risk of polluting the environment for a long time. Lutrasil® Pro spunlaids therefore make an active contribution to environmental protection in horticulture and agriculture.

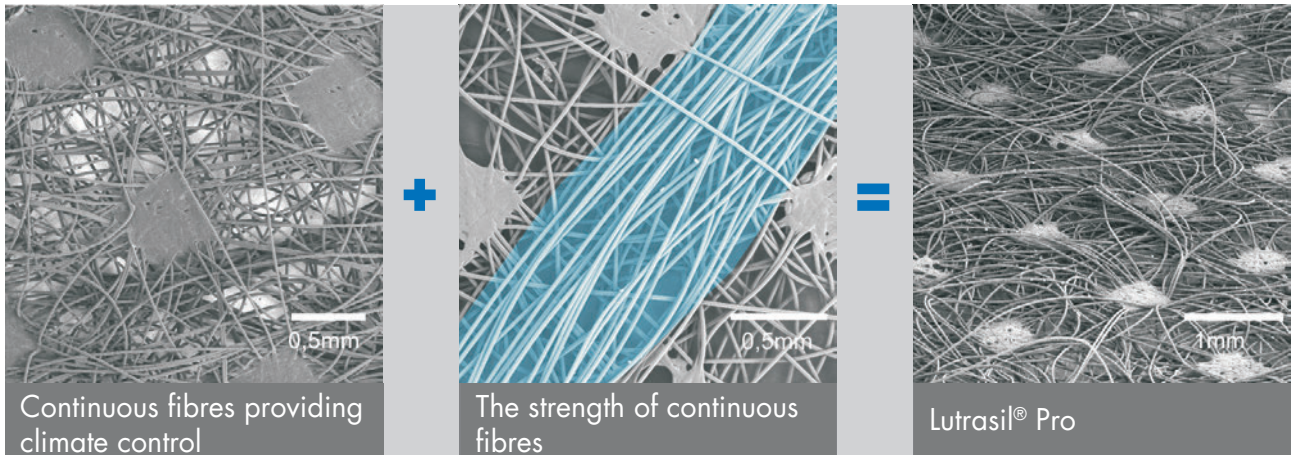
7. Product liability information

All technical information given are based on carefully evaluated laboratory work and production tests as well as on extensive experience and are reliable to the best of our knowledge.

Because of the variations in methods, conditions and equipment used commercially we strongly recommend that customers make their own tests to determine the suitability of our products for their own purposes.

Sole responsibility for use and application of our products, as well as for any further processing operations, shall be borne by the client. Any information provided in our documents with regard to the application, function and/or possible uses of our products, even as part of our specifications, shall be deemed as merely non-binding information and standard values. Such data shall provide, in particular, no basis whatsoever for liability and can, on no account, be applied to any other operating conditions than those stated here.

Lutrasil® Pro,
the intelligent combination providing strength
together with climate controlling endless fibres



- Consistent continuous fibres providing climate control whilst creating the best growth conditions for your horticultural crops.
- Strong endless fibres providing high durability and strength in all directions.

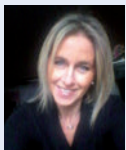




Stefano Briga
Sales Manager
sbriga@softnw.com



Mariateresa Aiolfi
Sales Assistant
mtaiolfi@softnw.com



Patrizia Zignone
Customer Service
pzignone@softnw.com



Ivan Papetti
Technical Manager
ipapetti@softnw.com



Eugenio Dodaro
Quality Assurance
edodaro@softnw.com



Cristina Bertoincin
Office Shipment
cbertoincin@softnw.com

Soft N.W., located in Cerreto Castello (Bi), is a business unit specialized in the production of 100% polypropylene Spunbonded nonwoven. Present on the nonwoven market since 1974, the company has been able to evolve during these years making itself conspicuous thanks to its professional nature, service and the quality of its products. For many years Soft N.W. has positioned itself in the agriculture protection market with high quality materials, born to satisfy its customers' needs all over the world. All the production stages, from PP granulate to sealed nonwoven for agriculture, are entirely executed in Cerreto Castello mill, using the best raw materials present on the market.



Producer



SOFT N.W. S.p.A.
Via Piave, 5 - 13852 Cerreto Castello (Bi) - Italy
Tel +39 015 882200 - Fax + 39 015 882135
softnw@softnw.com - www.softnw.com
C.F. 12952980154 - P.IVA 01984800027

Sales and distribution by