

The Gripple Plus range of wire joiners and tensioners is suitable for all fencing applications.

## FEATURES / BENEFITS

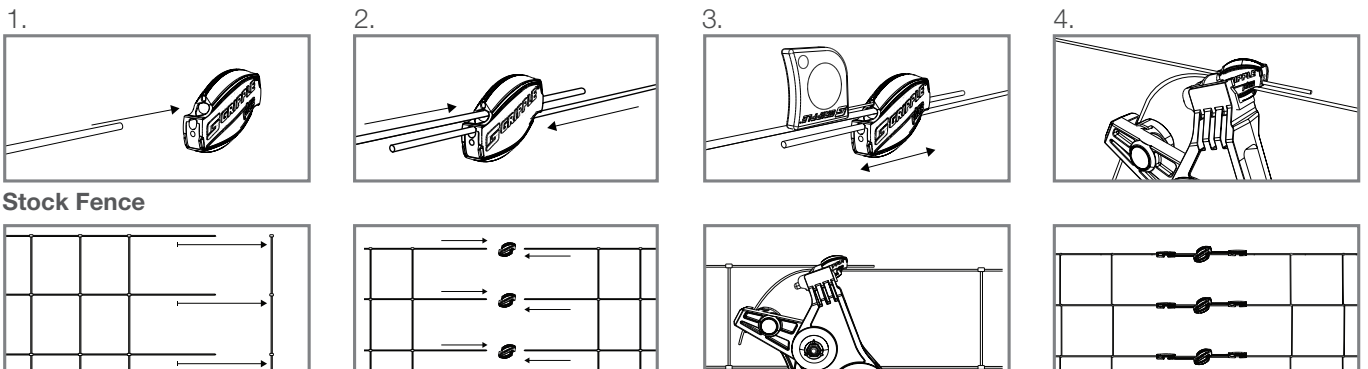
- Join and tension in one
- Eliminates tying and knotting wires, reducing installation time
- Ideal for use on high tensile and mild steel wire
- Designed for high load holding and corrosion resistance
- Easily re-tensioned year-after-year



## SPECIFICATION

| Product             | Wire Type              | Wire Range        | Standard Wire Gauge | Maximum Working Load |
|---------------------|------------------------|-------------------|---------------------|----------------------|
| Gripple Plus Small  | Plain, Field, Electric | 1.40 mm - 2.20 mm | 17 SWG - 14 SWG     | 300 kg               |
| Gripple Plus Medium | Plain, Field, Electric | 2.00 mm - 3.25 mm | 14 SWG - 10 SWG     | 400 kg               |
| Gripple Plus Large  | Plain, Field, Electric | 3.25 mm - 4.20 mm | 10 SWG - 7½ SWG     | 600 kg               |

## INSTALLATION



## TIPS

- Reposition before applying tension using a Setting Key
- Remove sufficient verticals prior to installation
- Apply and re-apply tension with a tensioning tool
- Trim excess wire with Wire Cutters, leave at least 75 mm tail wire to enable re-tensioning

